

# OUR

HOSPITALITY

BATES SMART™



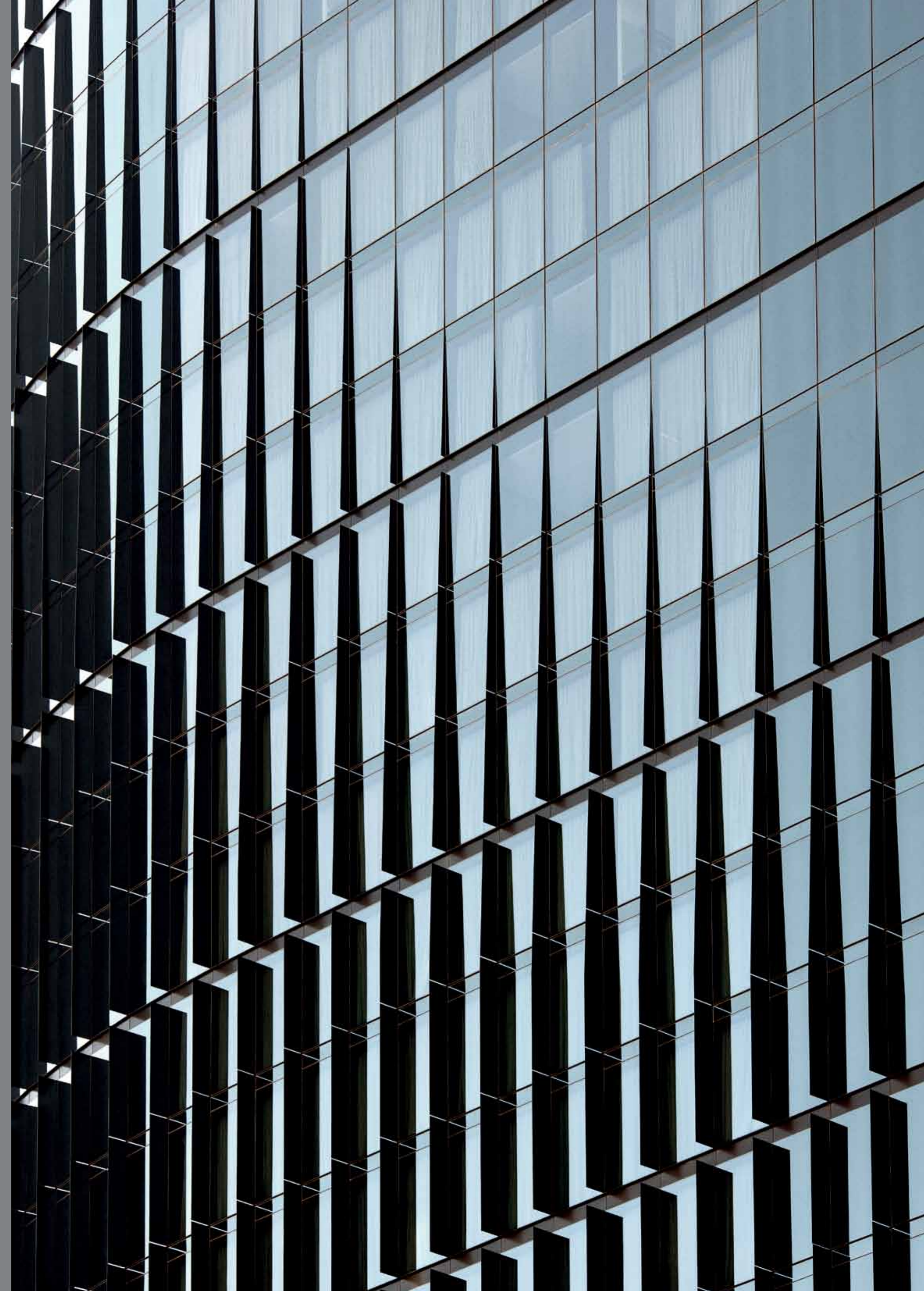
## JOURNAL /

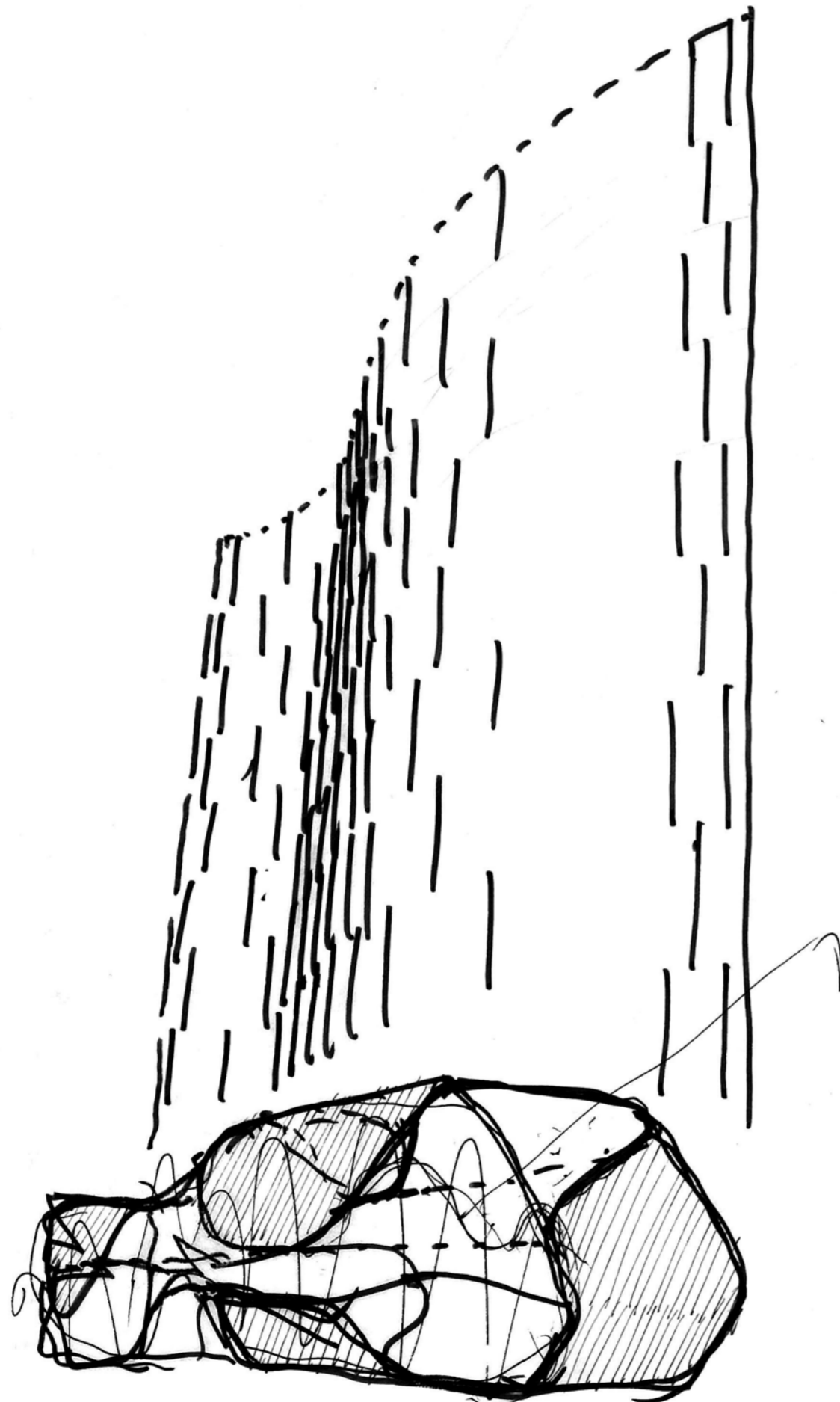
*Quality architecture is years in the making. Research, innovation, and creative development are often unseen until the unveiling of our finished buildings. Journal is the diary of Bates Smart, opening the doors to our culture, process and everyday innovation. Its role is to facilitate the sharing of knowledge and ignite an ongoing discourse between our people, our clients, our colleagues and the broader public. It is open to anyone who has an interest in architecture and how the discipline of design is shaping our cities.*

*This document is a selection of projects that represent some of the practice's current buildings and interiors projects.*

*We invite you to join the conversation and visit Journal online at*

<http://journal.batesmart.com>





**PICTURED**  
Crown Metropol, concept sketch  
Cover:  
Crown Metropol, façade detail

**03**  
**SEXY, BLACK AND TRÈS CHIC**  
Crown Metropol  
Southbank, Melbourne

**15**  
**A JOURNEY OF INTRIGUE  
AND DISCOVERY**  
Maze at Metropol  
Southbank, Melbourne

**19**  
**AWARD WINNING DINING**  
Rockpool Bar & Grill  
Sydney

**22**  
**MYSTERIOUS EAST**  
Spice Temple  
Sydney

**24**  
**CITY OF DREAMS**  
Crown Towers, City of Dreams  
Macau

**32**  
**FOUR SUITES  
AT FOUR SEASONS**  
Four Seasons  
Sydney

**34**  
**CROWNING LUXURY**  
Crown Towers, Room Upgrade  
Southbank, Melbourne

**35**  
**DESIGNER OF THE YEAR**  
Jeff Copolov

**36**  
**CLUB SOFITEL AND  
ROYAL SUITES**  
Sofitel  
Melbourne

**40**  
**150 CLARENDON STREET**  
East Melbourne, Melbourne

**45**  
**THE CAPITOL**  
South Yarra, Melbourne

**48**  
**CROWN CONFERENCE CENTRE**  
Southbank, Melbourne

**50**  
**CROWN TOWERS LEVEL 39**  
Southbank, Melbourne

**52**  
**SHÒ NOODLE BAR**  
Southbank, Melbourne

**54**  
**ALTIRA**  
Macau

**56**  
**CONVESSO**  
Docklands, Melbourne

**57**  
**PRIMA PEARL**  
Southbank, Melbourne

**59**  
**BOHEME**  
Bondi Beach, Sydney

CROWN  
METROPOL

# SEXY, BLACK & AND TRÈS CHIC

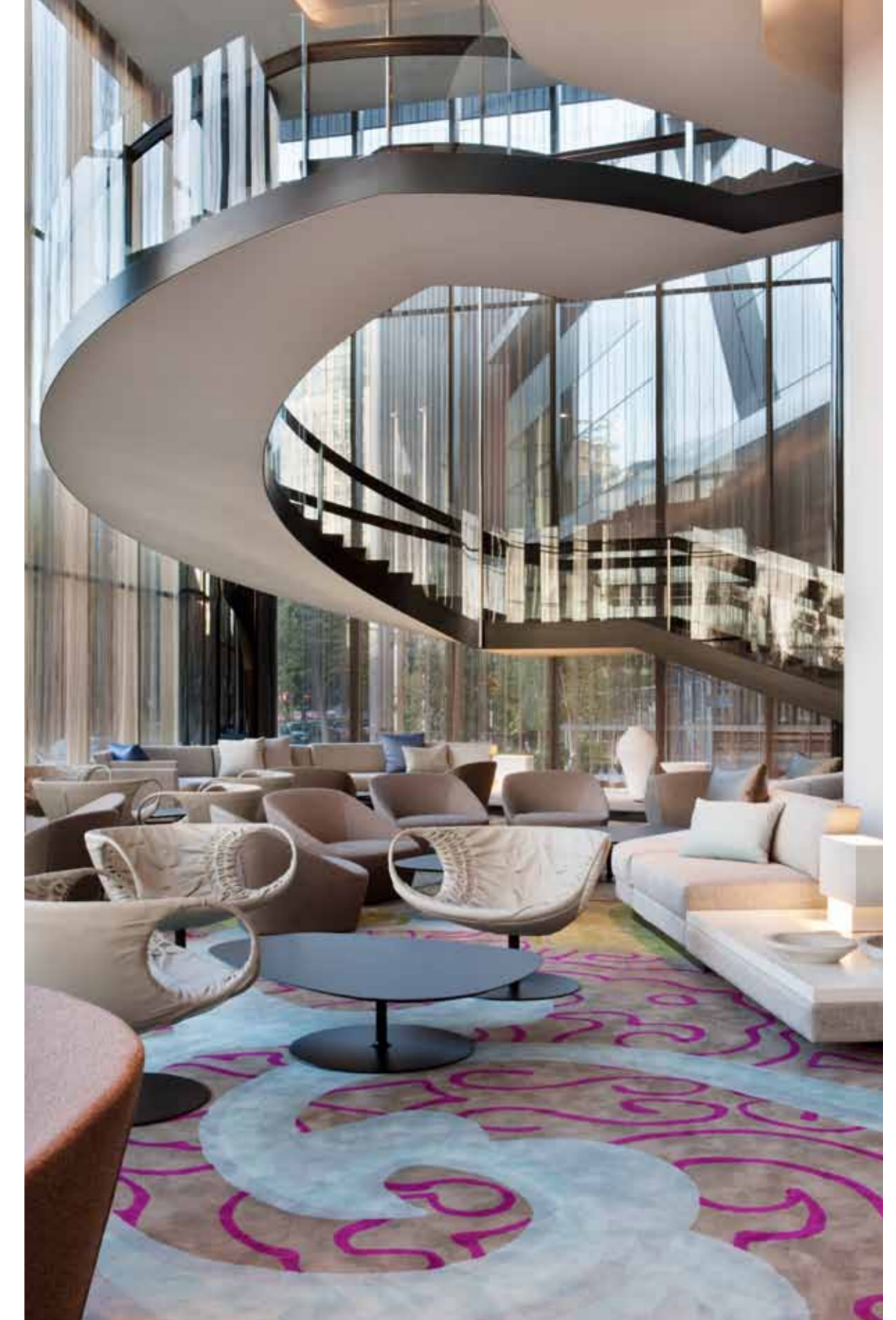
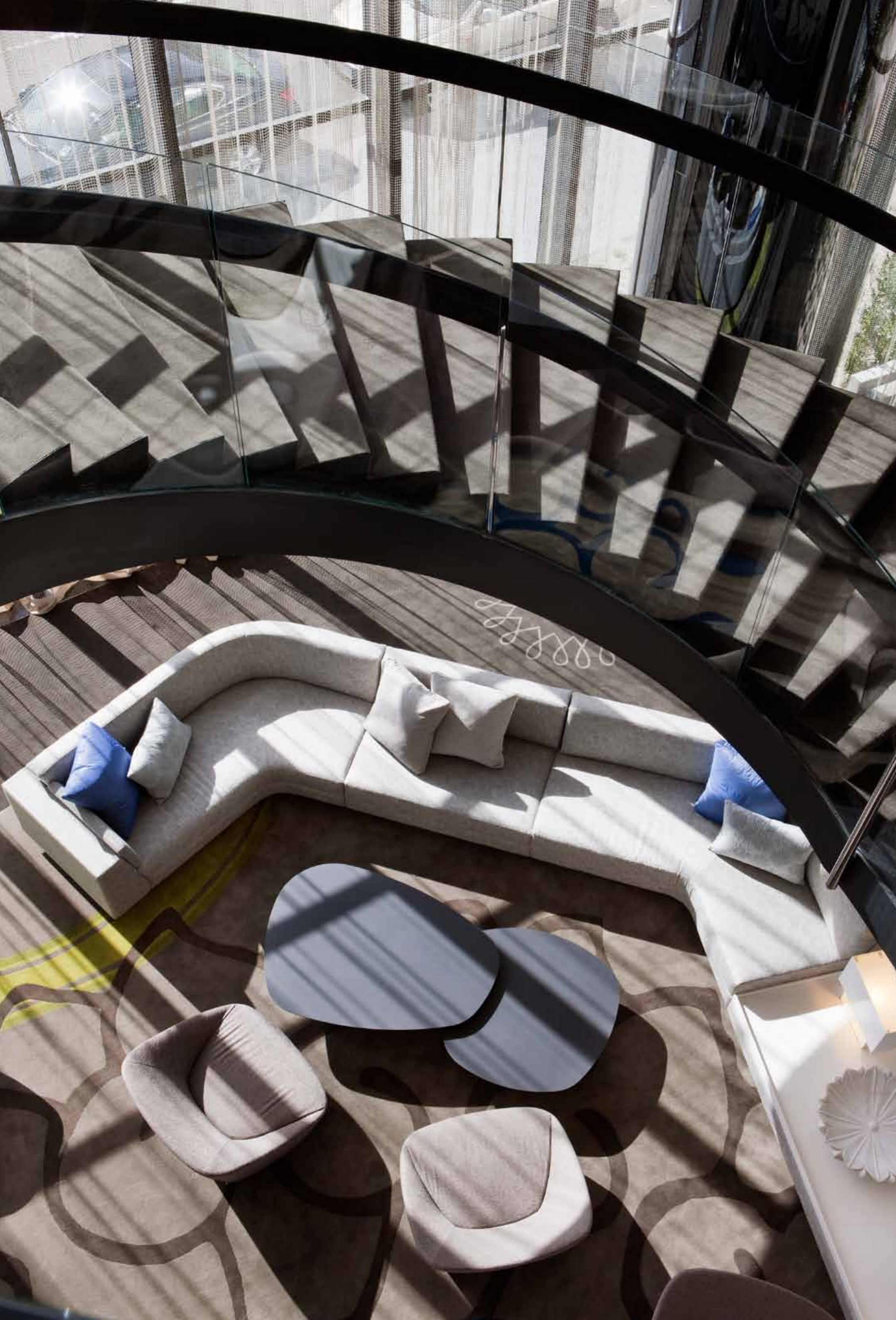
*Winner of the Australian  
Interior Design Award 2011  
for Hospitality Design*

—  
**“INSPIRED BY LIQUID MERCURY,  
THE TOWER’S SOFT LINES  
ARE ENHANCED BY SHIMMERING  
REFLECTIVE SKIN.”**  
—

**KRISTEN WHITTLE**  
*Director*



**PICTURED**  
Crown Metropol, tower  
Opposite page:  
Crown Metropol, port-cochère entry  
Crown Metropol, tower  
Previous page:  
Crown Metropol, lobby



**CROWN METROPOL  
SOUTHBANK, MELBOURNE**

Distinctive, vibrant and unmistakably modern, the 28-storey Metropol hotel challenges tradition with its unorthodox individuality and its dark, dramatic shapes and silhouettes.

Bates Smart developed the design from the inside out, conceiving of the architecture and interiors hand-in-hand. The 's'-shaped curve of the building creates an interior experience that is continually revealing itself to the guest. These curves make the interior feel intimate, inviting and slightly mysterious – sensual qualities essential to the boutique attitude of this luxurious hotel.

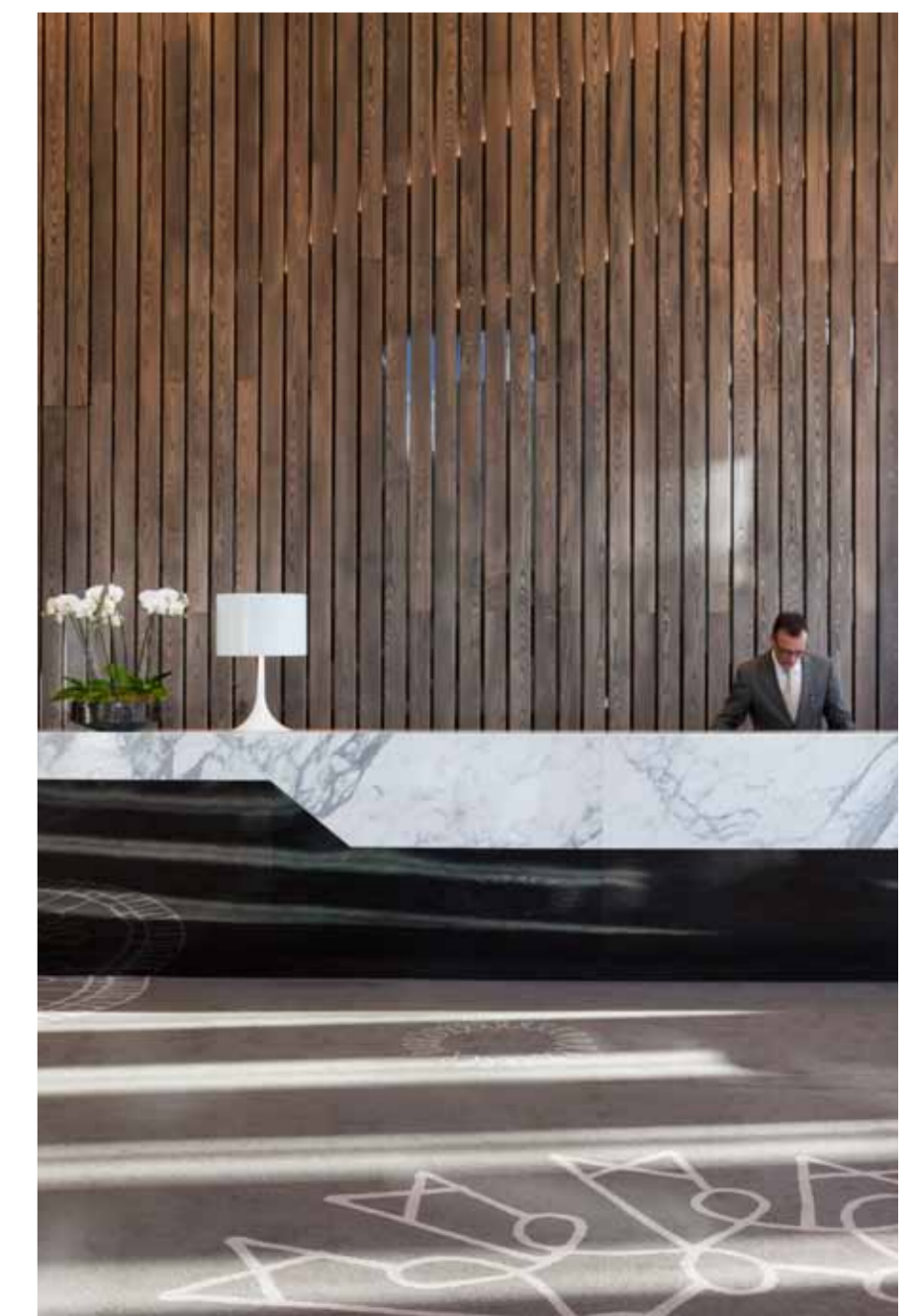
The Metropol features a sleekly futuristic, podium entry, 658 spacious, light-filled guestrooms, a luxurious day spa located on the top floors of the hotel and a sky bar and terrace at Level 28. In addition, the hotel includes Gordon Ramsay's maze Restaurant and maze Grill, extensive meeting facilities and dedicated business centre and a world-class training and recruitment facility.

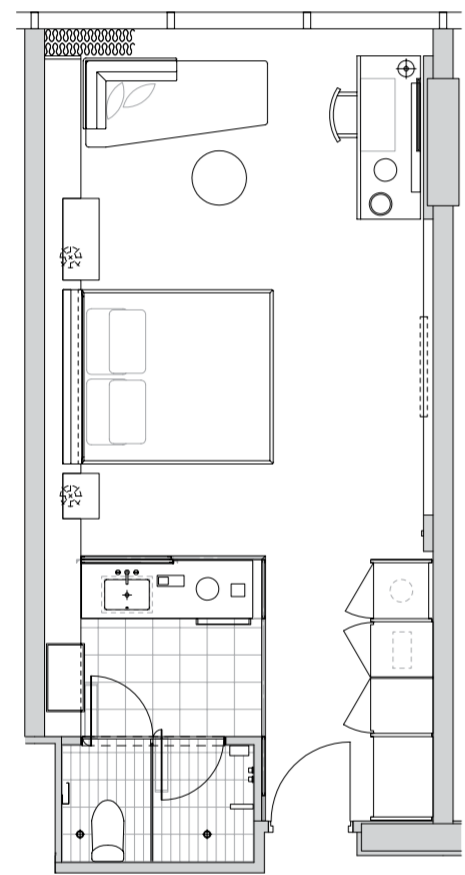
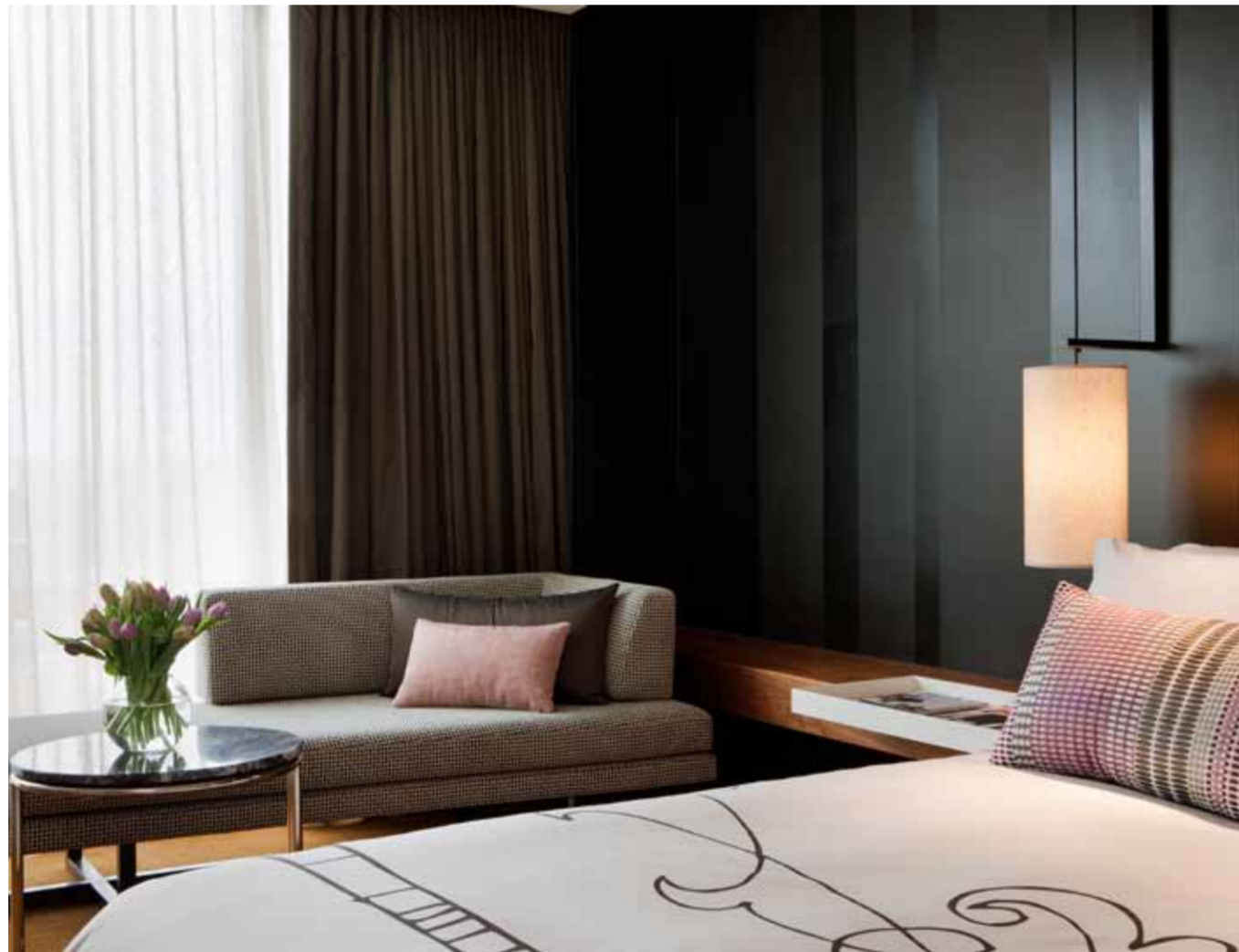
The project received the Australian Interior Design Award 2011 for Hospitality Design.

**PICTURED**

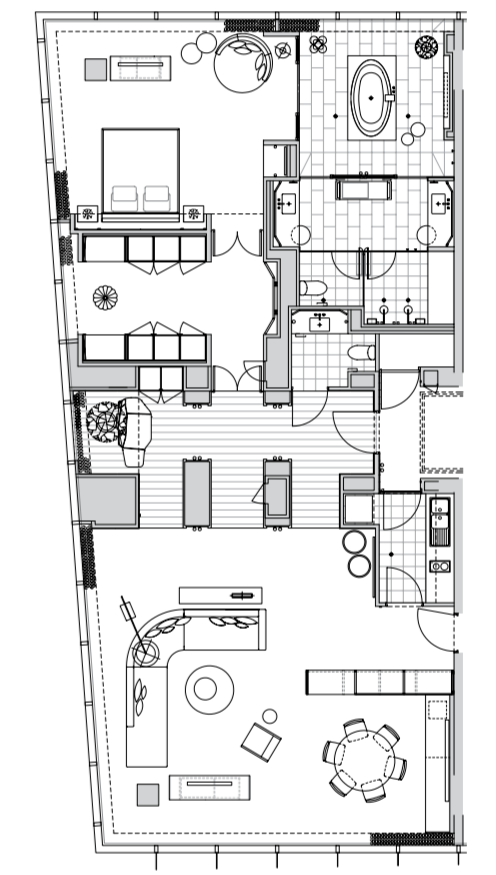
*Crown Metropol, lobby stair  
Crown Metropol, reception*

*Opposite page:  
Crown Metropol, lobby*





GUESTROOM PLAN



THE APARTMENT PLAN

**GUESTROOM**

Spacious guestrooms offer accommodation that is both distinctive and vibrant with a crafted contemporary boutique feeling. The generous bathrooms are open to the room allowing the occupant to enjoy the city and bay vistas. The woven Shoji-inspired sliding screens can also be closed to create a private, introspective space.



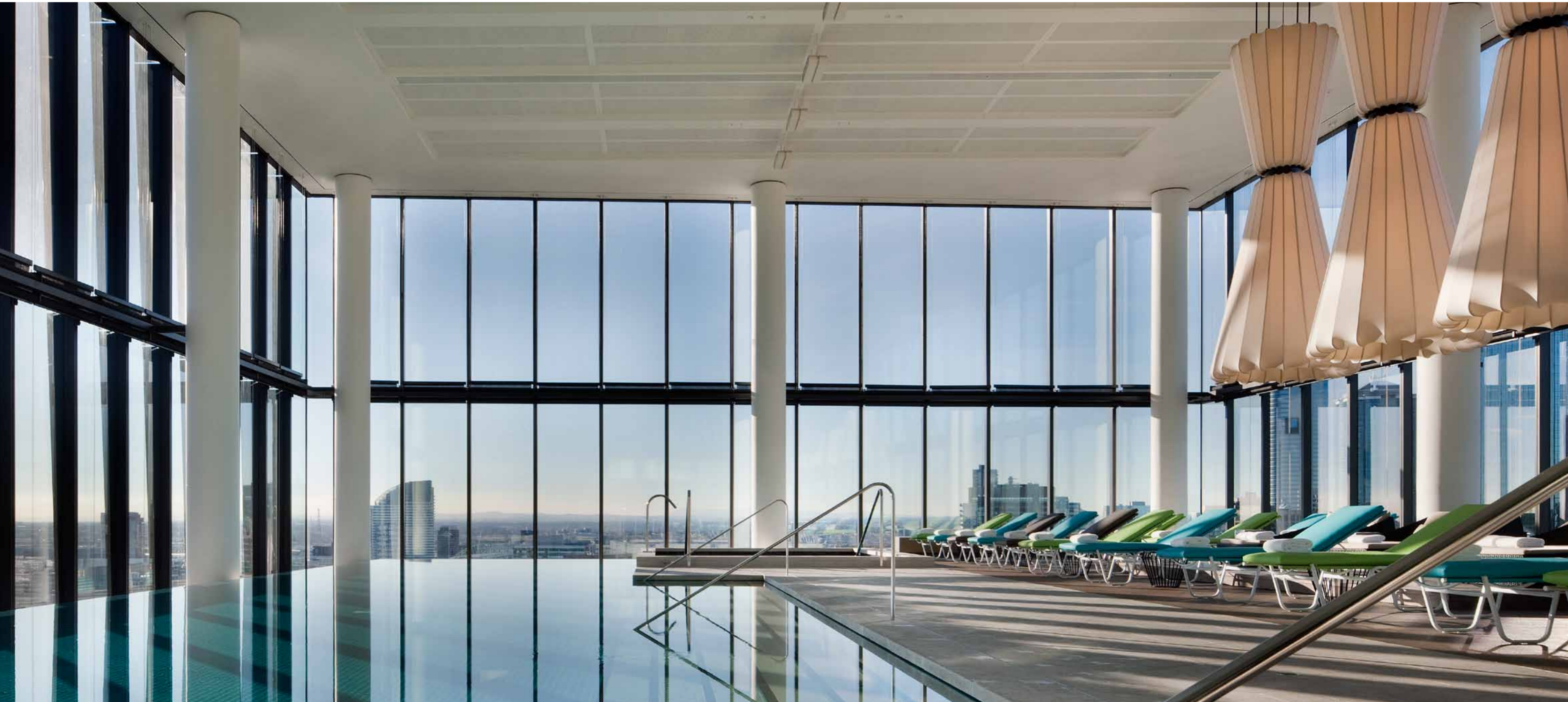
**PICTURED**  
Crown Metropol, guestroom  
Crown Metropol, guestroom  
Crown Metropol, guest bathroom



**THE APARTMENT**

Metropol's premier suite, The Apartment, is designed to evoke a New York loft. Sensuous, edgy and 'laid back', The Apartment's distinctive style is highly personalised, more like a friend's private home than a traditional hotel room.

**PICTURED**  
Crown Metropol, The Apartment bedroom  
Crown Metropol, The Apartment living room  
Crown Metropol, The Apartment ensuite



**PICTURED**  
Crown Metropol, level 27, 25-metre  
infinity edge swimming pool



—  
**“WE CAREFULLY SELECTED  
AND COMMISSIONED THE ART  
COLLECTION TO DEFINE THE  
HOTEL’S UNIQUE CHARACTER.”**  
—

**JEFF COPOLOV**  
*Director*



**PICTURED**  
Crown Metropol, 28 entrance  
Crown Metropol, 28 lounge night view  
Crown Metropol, 28 lounge  
Opposite page:  
Crown Metropol, 28 lobby  
Crown Metropol, Isika lobby



MAZE AT METROPOL

# A JOURNEY OF INTRIGUE AND DISCOVERY

*Gordon Ramsay's restaurant*

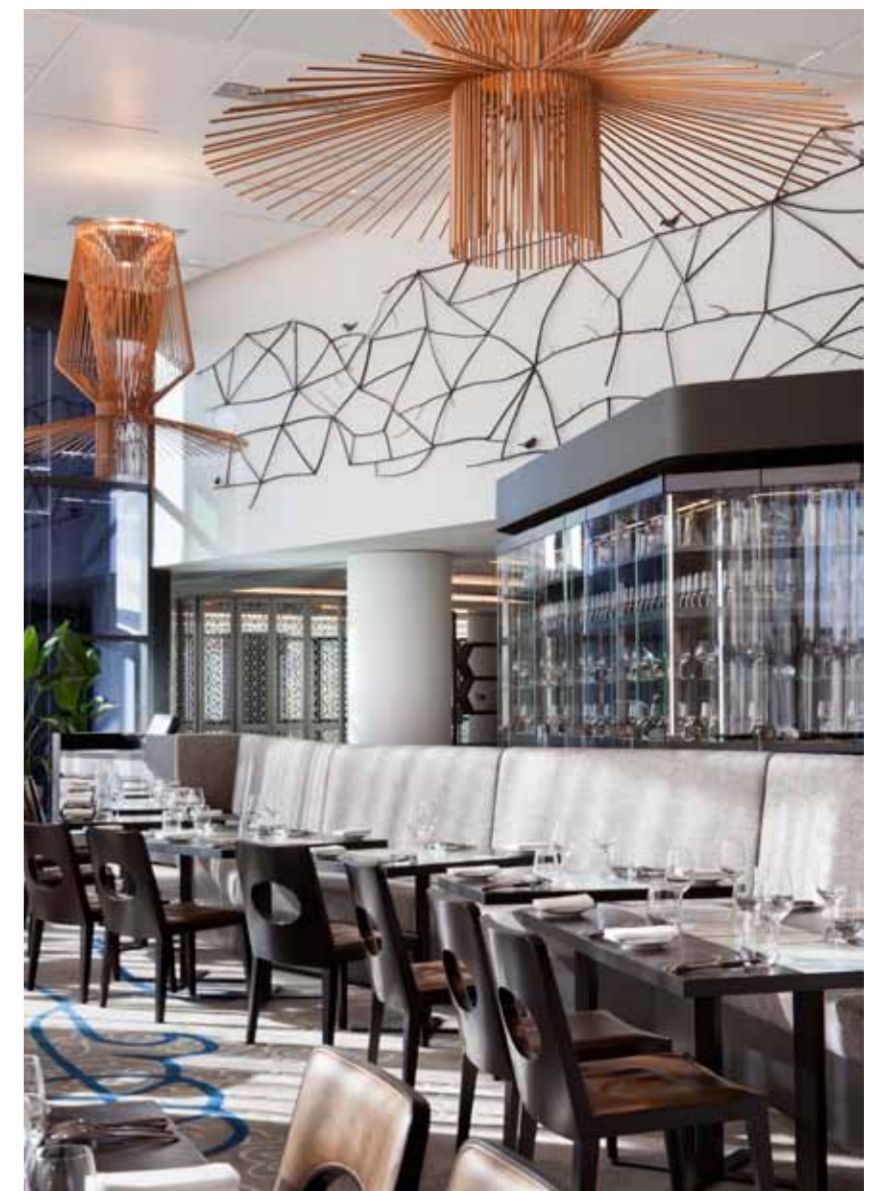
**MAZE AT METROPOL  
SOUTHBANK, MELBOURNE**

Maze occupies a sculptural architectural object perched outside the main tower of Crown Metropal.

As the name suggests, maze's interior is a journey of intrigue and discovery. Like an evocative landscape which is gradually revealed and unfolded to the visitor, Bates Smart has created a captivating sequence of spaces that are constantly transitioning

from one setting to another, offering a diversity of experiences within one venue. This strategy conceals the true size of the restaurant, making each dining experience feel more intimate.

Artist David Band was commissioned to create a relief sculpture crafted from birch tree branches. The work evokes an ivy-clad wall and travels 60 metres through the interior of maze.

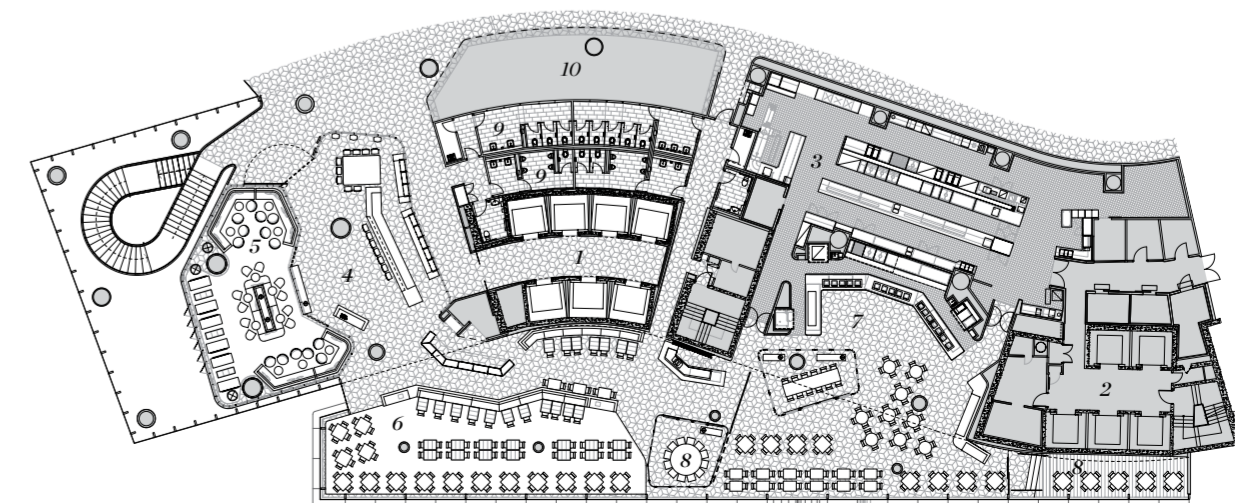


**FLOOR PLAN**

1. Guest lift lobby
2. Goods lift lobby
3. Kitchen
4. Bar
5. Lounge
6. A La Carte
7. Buffet
8. Private dining
9. WC
10. Retail

**PICTURED**

maze, dining room  
 maze, dining room  
 maze, private dining  
 maze, floorplan  
 Opposite page:  
 maze, grill  
 Previous page:  
 maze, bar





ROCKPOOL  
BAR & GRILL

---

# AWARD WINNING DINING

---

*Neil Perry's restaurant in Australia's  
most beautiful dining room*

---

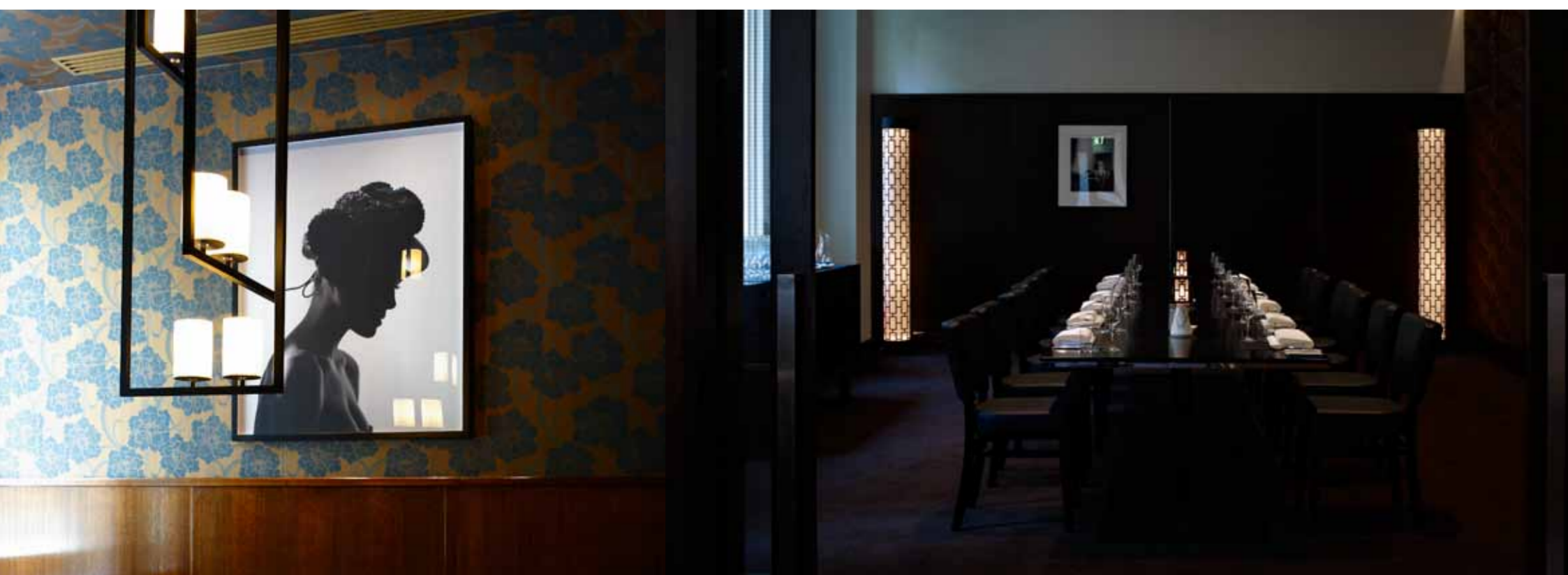


—

*“Our concept celebrates the heritage space creating a grand dining room which is both intimate and spectacular.”*

—

**SIMON SWANEY**  
*Director*



**ROCKPOOL BAR & GRILL  
 SYDNEY**

To discover the essence of the new Rockpool Bar and Grill, we looked to Neil Perry's strongly held philosophy. He is committed to using the best quality produce and suppliers for every ingredient. Rockpool's interior reflects the integrity of Perry's approach.

Bates Smart saw the opportunity to display and celebrate the process of creating remarkable food. The openness of the cooking areas allows guests to experience the intense concentration of the chefs at work, the theatre of flame on the grill and the wonderful aroma. Not only does this express the spectacle of cooking, but the character of great food, its source and preparation.

The idea of authenticity extends to the selection of materials, finishes and furnishings. Richness in texture and surface is countered by restraint. Materials are honest in their origins and used in their natural state.

The lighting design dramatises the space and provides great warmth and intimacy. The use of thousands of pieces of glassware to form "chandeliers" introduces a memorable sense of playfulness.

The project received the Australian Interior Design Award 2010 for Hospitality Design.

**PICTURED**  
 Rockpool Bar & Grill, dining room  
 Opposite Page:  
 Rockpool Bar & Grill, private dining room





—  
*“Neil Perry has a passion for the flavours of Sichuan, Guangxi and Xinjiang food. Our design captures this passion to create an exotic, memorable experience.”*  
 —

**SIMON SWANEY**  
*Director*

**SPICE TEMPLE  
 SYDNEY**

Spice Temple continues the Sydney tradition of basement venues as intriguing places for vibrant entertainment. Bates Smart’s design evokes the mysteries of the East and expresses Perry’s approach to the menu and flavours of Spice Temple.

To reinforce the idea of mystery, the journey begins at the street with a ‘secret door’, consisting of an LED screen projecting evocative images. Guests move to the foot of the stairs, where glimpsed views are offered through raw timber screens, abstracted by subtle lighting.

Materials in the entry sequence are honest and textured. Lively acoustics and dynamic lighting recall the hawker markets of Asia. In contrast, the dining areas are rich and embracing, with hushed acoustics and moody lighting.

A literal application of traditional motifs has been avoided. The essence of Asian culture and its sensibilities is created through colour and contrast, weaving an experience for all the senses.



**SPICE TEMPLE**  
 —  
**MYSTERIOUS EAST**

—  
*Neil Perry’s underground  
 Asian experience*  
 —



**PICTURED**  
*Spice Temple, dining room*



CROWN TOWERS  
CITY OF DREAMS  
MACAU

---

# CITY OF DREAMS

---

*Unrivalled luxury and quality  
in a landmark resort*

---

**CROWN TOWERS, CITY OF DREAMS  
MACAU**

City of Dreams is a premium integrated resort with a generous array of luxurious accommodation, restaurants and landmark entertainment facilities. Bates Smart designed all of the interiors for the 6 star Crown Towers hotel with its 260 rooms, 56 suites and 32 villas, lobby and restaurants, spa complex and VIP gaming 'sky salons', in addition to the premium and main gaming areas of the resort.

The beauty of natural materials is celebrated throughout the hotel. A rich and layered array of fabrics and furnishings has been selected for each space with emphasis on high quality, finely crafted, individualised interiors. Bespoke lighting and meticulous detailing complements the interiors.

Bates Smart's design plays upon themes of water that run through the entire City of Dreams complex. The textures of glistening water are interpreted by using shimmering materials and patterns which express water in its many forms.

Throughout the project, Bates Smart worked closely with base building architects Arquitectonica, and contributed to the overall City of Dreams resort master plan.

The project received the Australian Interior Design Award 2010 for Best International Design.



**PICTURED**  
*Crown Towers, City of Dreams,  
premium gaming*  
*Opposite page:  
Crown Towers, City of Dreams, lobby*  
*Previous page:  
Crown Towers, City of Dreams, lobby*





**PICTURED**

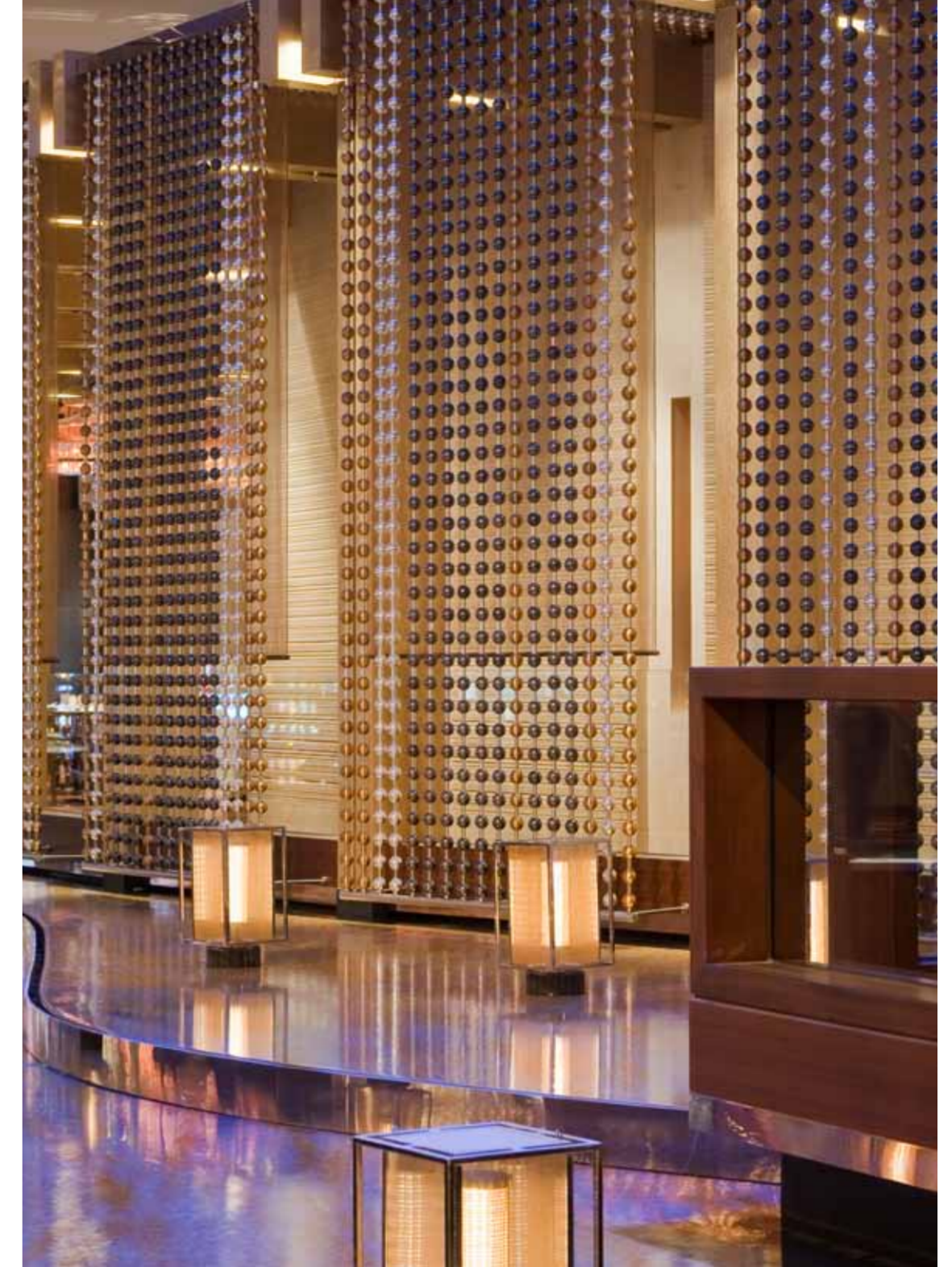
*Crown Towers, City of Dreams, guestroom*  
*Crown Towers, City of Dreams, guest bathroom*  
*Crown Towers, City of Dreams, spa*  
*Opposite page:*  
*Crown Towers, City of Dreams, spa entrance*





—  
“The main gaming area has a fluid and dynamic centre. Subtle but ever-changing lighting hints at golden sunlight reflecting off a rippling pool.”  
—

**JEFF COPOLOV**  
*Director*



**PICTURED**  
Crown Towers, City of Dreams, main gaming area  
Crown Towers, City of Dreams, VIP gaming  
Opposite page:  
Crown Towers, City of Dreams, dining  
Crown Towers, City of Dreams, lounge bar

FOUR SEASONS

# FOUR SUITES AT FOUR SEASONS

*What is it in the moment of arrival  
that makes us feel welcome?*



## FOUR SEASONS SYDNEY

First impressions are lasting and powerful. The emotions generated stay with us long after the experience has passed; they anchor the memory of experience.

Transforming three Royal Suites and one Presidential Suite at the Four Seasons Hotel, Sydney, Bates Smart has elevated the guest's experience to one that celebrates the unique qualities of Sydney Harbour, one of the great romantic destinations in the world.

The Suites have a personal, intimate quality that evokes the elegance of generous apartments of the past. Sensuous, gracious and refined, Bates Smart's vision creates a feeling of being a welcome guest in a friend's warm, chic, pied-a-terre.

The luxurious interiors feature strong undertones of glamour with an intriguing, French twist. The Suites deliver the promise of luxury and comfort beyond the memorable moment of arrival.





JEFF COPOLOV

# DESIGNER OF THE YEAR

*"I seek a balance of innovation, timeless design and excellence."*



## CROWNING LUXURY

*Refreshing 5 Star refurbishment*

### CROWN TOWERS, ROOM UPGRADE SOUTHBANK, MELBOURNE

Bates Smart's refurbishment of Crown Towers, Melbourne, maintains the hotel's position as the premier hotel in Australia. Located on the banks of the Yarra River, Crown Towers is a luxury 5 star hotel featuring 500 deluxe rooms and suites, each offering sumptuous accommodation to the highest international standards. Crown Towers also features 32 villas occupying the top 9 floors of the hotel and ranging in size up to 1,200 sqm.

Bates Smart designed the original Crown Towers which opened in 1997. Ten years later, we were briefed to ensure that the rooms continue to meet the highest level of guest expectations, offering an impeccable standard of design and attention to detail. The hotel bathrooms were meticulously rebuilt to contemporary standards, making them feel brighter and larger with the latest in technology to provide a truly unique level of comfort and finish.

**PICTURED**  
Crown Towers, Room Upgrade, guestroom  
Crown Towers, Room Upgrade, guest bathroom



Jeffery Copolov is the Interior Design Director of Bates Smart and one of Australia's most talented interior designers. With 30 years experience, he has a classically modern, timeless approach to design and a reputation for producing highly refined, carefully targeted and tailored, bespoke solutions. He is known for his relentless attention to detail.

Working with the architectural teams from a project's inception, Jeff oversees the entire design process to craft buildings from the inside out. He has a deep understanding of the commercial and operational requirements that inform his design solutions. His broad experience in a wide range of building types, including commercial, hospitality, residential, education, health and science projects promotes cross-disciplinary thought.

Judges of the 2010 Interior Design Excellence Awards (IDEA) selected Jeffery Copolov, as Australia's 'Designer of the Year'.

**PICTURED**  
Jeff Copolov in the Bates Smart studio



SOFITEL

—

# CLUB SOFITEL AND ROYAL SUITES

—

*Life is suite*

—



**CLUB SOFITEL AND ROYAL SUITES  
MELBOURNE**

Sofitel Melbourne is a 5 star hotel located within Collins Place at the 'Paris end' of Collins Street. Bates Smart refurbished the Executive Club Lounge on level 35 and the exclusive hotel suites on level 50 at the top of the hotel.

Club Sofitel is an executive lounge which extends the hotel's hospitality for frequent and premium guests. Amenities include check-in, bar and dining facilities, bathrooms, quiet work areas and meeting rooms. A freestanding fire place is the focal point of the generous guest lounge, complemented by the stunning views over Melbourne.

The 50th floor is the premium level of the hotel with 13 guest suites. We created a new Royal Suite by joining two existing suites, providing a generous perimeter bathroom to take advantage of spectacular views. The new finishes palette is classically modern, warm, elegant and sophisticated, emphasising natural materials of the highest quality.

**PICTURED**

*Sofitel Melbourne, Royal Suite dining and lounge  
Sofitel Melbourne, Royal Suite bedroom  
Sofitel Melbourne, Royal Suite bathroom*

*Opposite page:  
Club Sofitel, lounge area  
Previous page:  
Club Sofitel, reception*



---

# 150 CLARENDON STREET

---

*Introducing the vertical village*

---



---

## **150 CLARENDON STREET EAST MELBOURNE, MELBOURNE**

This 12-storey apartment building at 150 Clarendon Street, East Melbourne has an extraordinary presence and character, with magnificent park views to the City and Port Phillip Bay. Our challenge was to create Melbourne's most prestigious apartment building while retaining the structure of a former high-rise hospital, located within a predominantly low-rise residential neighbourhood. In this project, we have accentuated the building's relationship to its parkside setting in tranquil, leafy East Melbourne.

Bates Smart has crafted beautifully appointed and generously proportioned apartments for gracious living. Adopting a calming symmetry and simplicity, the building achieves a sympathetic relationship to its historical setting. Close examination reveals forms and materials that are crisply detailed using a contemporary palette of timeless, quiet elegance.

---

*“Everything is designed  
on a bigger and  
more impressive scale.”*

---

**ROGER POOLE**  
*Director*

**PICTURED**  
*150 Clarendon Street, exterior*  
*Opposite page:*  
*150 Clarendon Street, lobby*





---

# THE CAPITOL

---

*Creating an urban sanctuary*

---

## **THE CAPITOL SOUTH YARRA, MELBOURNE**

The Capitol is a new residential, office and retail development designed to exploit South Yarra's vibrant mix of culture, dining, shopping and riverfront recreation. The residential tower brings together two elliptical forms, ensuring that light and shadows play across its surface. The design creates an elegant, slender composition of dynamic character, changing with one's viewpoint and the weather.

Entered through a new paved garden square, the sheltered porte cochere leads from the hotel-like ground floor to residences and penthouses of exceptional quality, generous in scale and proportion, and crafted from beautiful materials with meticulous care. This is an environment which is truly metropolitan, yet provides a place of sanctuary.

The Capitol Club gives residents access to a 25 metre pool, gymnasium, club lounge and elevated gardens which offer a calm contrast to the energetic neighbourhood below. The pool pavilion extends into the garden, with an undulating ceiling and perimeter skylights which capture and soften the water experience, contributing to an atmosphere of calm contemplation.

**PICTURED**  
*The Capitol, street view*  
*Opposite page:*  
*The Capitol, tower*





—  
“The play of light across  
the elliptical forms changes  
constantly depending  
on one’s viewpoint.”  
—

**ROGER POOLE**  
*Director*

**PICTURED**  
*The Capitol, night view*  
*The Capitol, apartment interiors*





---

# CROWN CONFERENCE CENTRE

---

*Flexible, intelligent conference  
facilities integrated  
into the Crown precinct*

---



## **CROWN CONFERENCE CENTRE SOUTHBANK, MELBOURNE**

The Crown Conference Centre in Melbourne's Southbank is an important companion to the existing Crown Promenade Hotel. The new building has been conceived as an extension, both functionally and aesthetically, allowing Crown to package high-value self-contained conference and exhibition events in a single venue.

The Crown Exhibition Hall, Meeting Rooms and the Crown Conference Hall are housed in a rectangular volume visible through the glazed façade and served by large multi-purpose pre-function spaces filled with natural light.

The Conference Centre has the ability to host two large conferences under one roof, seating 840 delegates in the new Crown Conference Hall and bringing the total capacity for larger conferences to 1500 delegates. The Centre incorporates the most advanced technology available.



### **PICTURED**

*Crown Conference Centre, exterior  
Crown Conference Centre, pre-function area*

*Opposite page:  
Crown Conference Centre, registration desk  
Crown Conference Centre, pre-function area*



# CROWN TOWERS LEVEL 39

International VIP gaming salons



## CROWN TOWERS LEVEL 39 SOUTHBANK, MELBOURNE

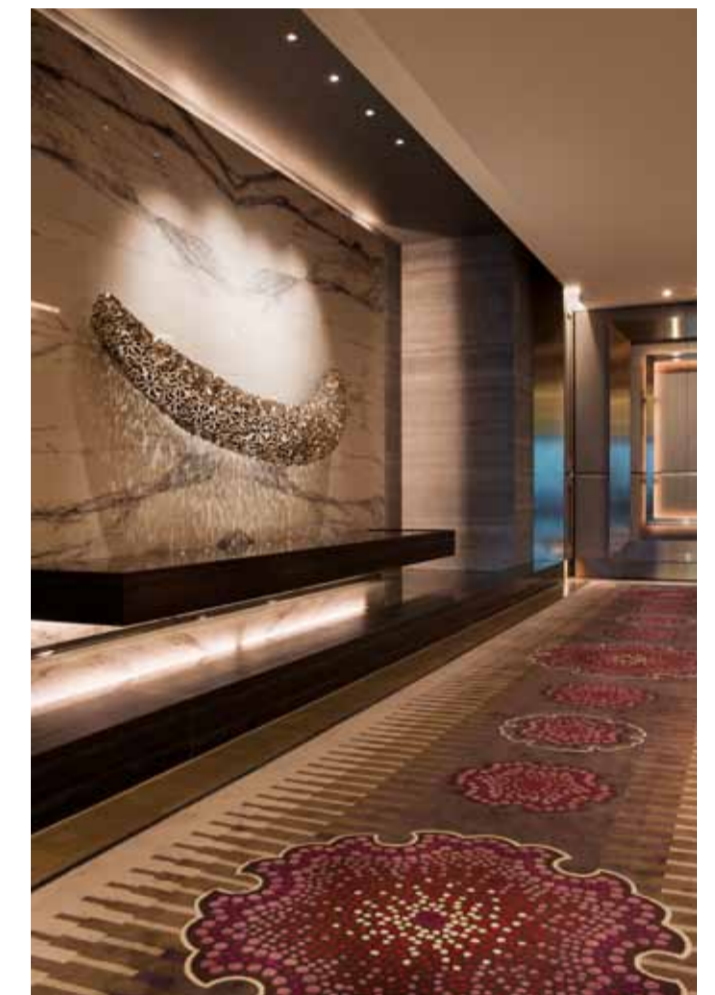
Level 39 of Crown Towers is the world's most luxurious VIP gaming environment, comprising four private gaming salons, with the ambiance of individual penthouse apartments. Each salon is crafted from the finest materials with meticulous detailing, bespoke fittings and specially commissioned artworks.

Strategically, Level 39 reaffirms Crown's leadership position as the world's foremost premium gaming destination.

### PICTURED

*Crown Towers, level 39 reception  
Crown Towers, level 39 lobby  
Crown Towers, level 39 lounge*

*Opposite page:  
Crown Towers, level 39 gallery*



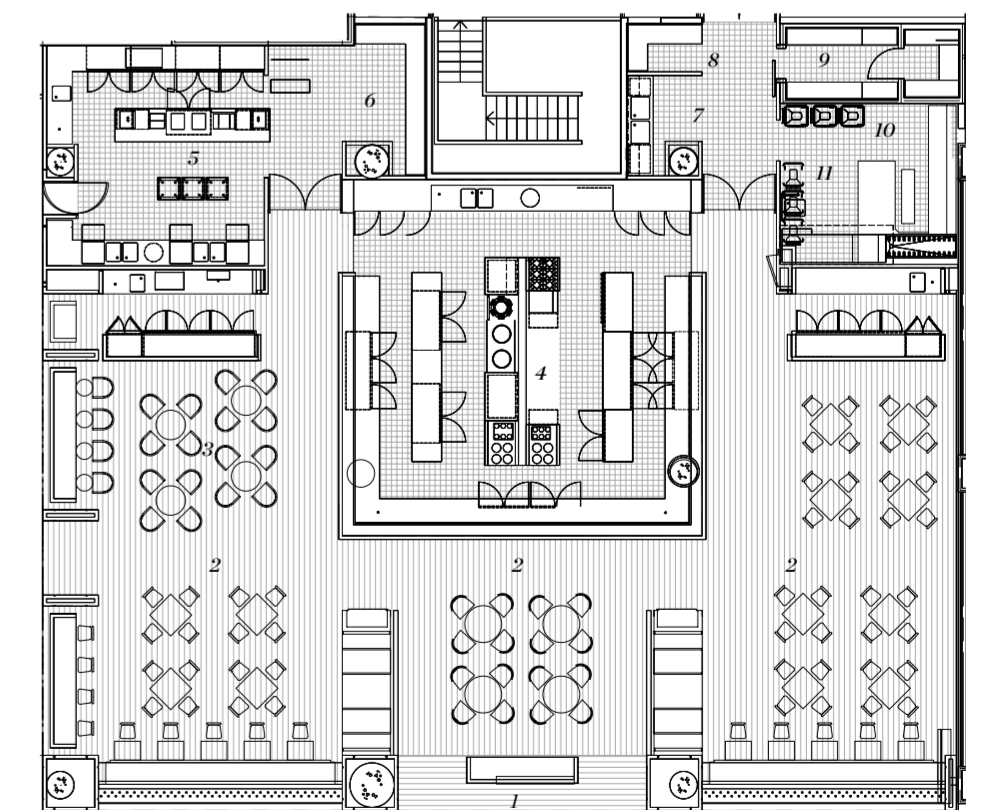
# SHÒ NOODLE BAR

Asian kitchen theatre takes centre stage

## SHÒ NOODLE BAR SOUTHBANK, MELBOURNE

Shò Noodle Bar is designed around an open kitchen which forms the central spectacle of the restaurant. Guests experience five chefs working simultaneously over steaming stockpots, dim sim baskets, woks, satay and noodle stations. Racks of hanging roast ducks, glass chillers with fresh vegetables and traditional Asian spices add to the restaurant's theatrical atmosphere.

On arrival, guests see two tea mountains set on the restaurant's bar which, according to feng shui principles, bring good luck. Tea stations showcase twenty four of the world's finest teas from China and Taiwan, which are expertly prepared and served by the restaurant's tea master.



- SHÒ FLOOR PLAN**
1. Entry
  2. Dining area
  3. Lounge area
  4. Noodle bar
  5. Dispense bar
  6. Bev. store/ Ice
  7. Potwash
  8. Store
  9. Coldroom
  10. Dishwash
  11. Waste

**PICTURED**  
Shò Noodle Bar, tea display  
Shò Noodle Bar, chefs  
Shò Noodle Bar, open kitchen  
Shò Noodle Bar, tea service




---

# ALTIRA MACAU

---

*Modern glamour combines with finely  
crafted intricate detail*

---



## ALTIRA MACAU

Our brief for Altira Macau's premium gaming levels was to bring a new standard of sophisticated contemporary design to Macau's entertainment offer. Located on levels 8, 9 and 37 of the Altira Macau tower, this sumptuous private club environment evokes the modern glamour of a penthouse apartment, making the most of the spectacular views.

A rich layer of intricacy is created through the use of shimmering materials, metallic screens, and ornate custom-designed carpets inspired by radiating starbursts. The spectacular focal point of the main bar is a floating canopy ceiling composed of thousands of hand-blown glass bubbles.

### PICTURED

Altira Macau, main bar  
Altira Macau, gallery  
Altira Macau, lounge  
Altira Macau, VIP gaming

# CONVESSO

*A sinuous line links the two towers with one fluid gesture, while the form of the podium recalls the movement of water against the wharf*



# PRIMA PEARL

*Concept design for public interior spaces*



## CONVESSO DOCKLANDS, MELBOURNE

With water frontage on both sides, the exceptional site of Convesso in Melbourne's Docklands inspired our design response. Bates Smart investigated the many patterns of light on water, and reflected these forms in the sculpting of the façades. The two towers are shaped to maximise the panoramic views.

Bates Smart's architects and interior designers developed a seamless design solution with great variety in apartment type and location. The rooftop garden level provides a swimming club, gymnasium and a series of unique garden apartments.

The Waterfront Promenade features north facing, sun-drenched restaurants and cafés lined with shade trees. Between the two towers, a new urban square offers a waterfront address to both lobbies. A lively retail environment animates the ground plane and links it back to the bustle of the city.

**PICTURED**  
 Convesso, tower and outlook  
 Convesso, street view  
 Convesso, apartment  
 Convesso, lobby



## PRIMA PEARL SOUTHBANK, MELBOURNE

Bates Smart has provided the conceptual designs and preferred material selections for public areas in this high rise residential tower. Our design studies include the ground floor lobbies, the level 6 swimming pool, sauna, spa and gymnasium, lounge, cinema and library as well as the level 67 sky lounge and pool.

Bates Smart's concepts illustrate a refined and sophisticated approach to urban living, in line with a contemporary 5 star hotel; their further development and delivery are by Prima Pearl's base building architects.

**PICTURED**  
 Prima Pearl, level 67 lounge  
 Prima Pearl, lobby  
 Prima Pearl, level 6 pool



BOHEME

---

# THE SPIRIT AND STYLE OF BONDI

---

*A contemporary design reflecting  
Bondi's Art Deco heritage*

---

**BOHEME  
BONDI BEACH, SYDNEY**

Bates Smart's luxury residential project 'Boheme' at Bondi Beach continues our collaboration with long-term clients, the Toga Group.

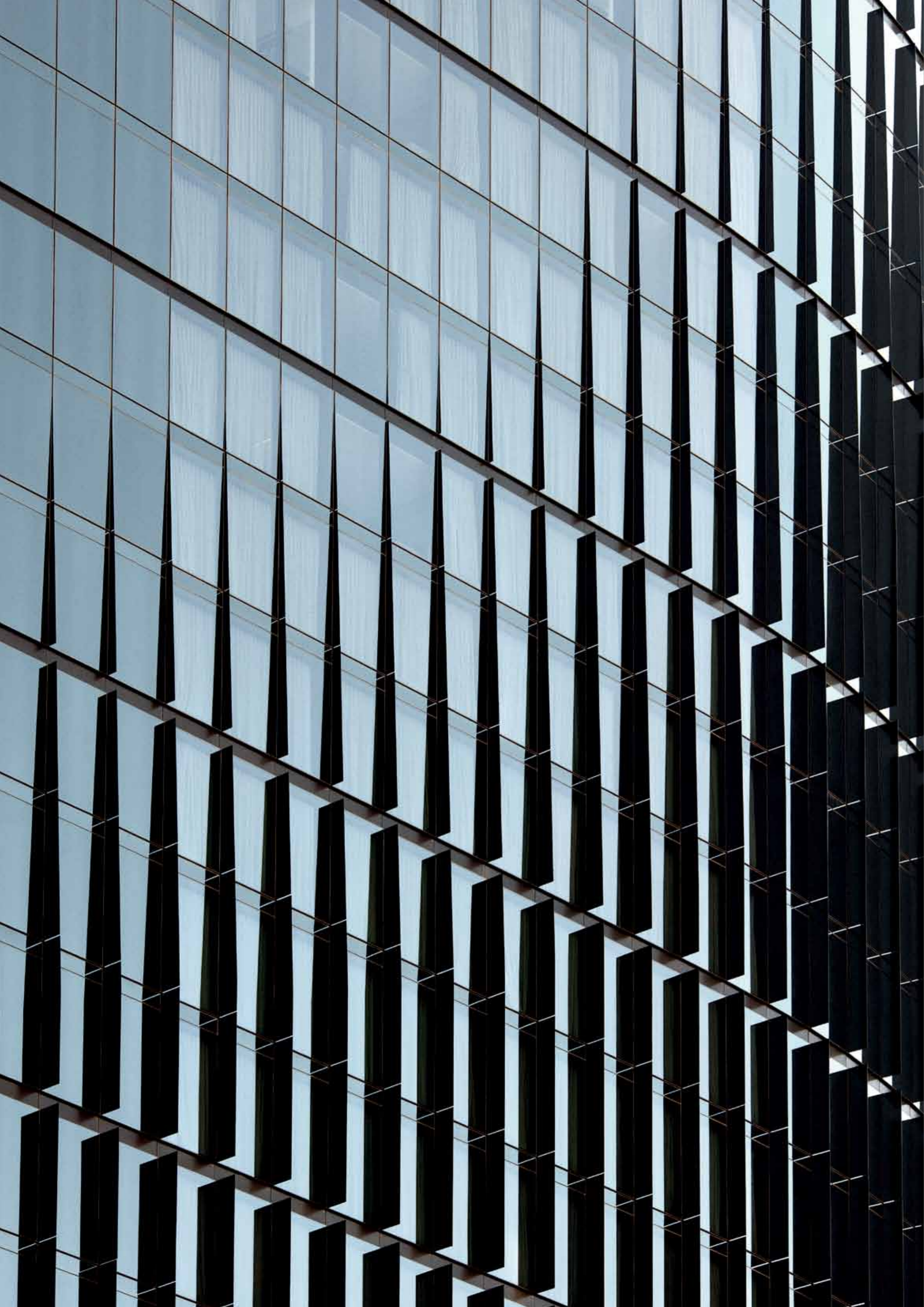
The lower levels of Boheme embrace the vibrant, cosmopolitan street life of Bondi. Above, Boheme takes on a more sensuous form with five floors of luxurious residential living, wrapped in sweeping horizontal bands of glass which reflect the character of the Art Deco movement in Bondi.

Bates Smart's design has transformed the ground floor of the iconic Hakoah Club into an elegant space that encapsulates the spirit and style of Bondi.



**PICTURED**  
*Boheme, apartment  
Boheme, living room  
Opposite page:  
Boheme, kitchen  
Boheme, bathroom*





## **CREDITS**

**DESIGN**  
Cornwell

**PHOTOGRAPHERS  
AND VISUALISERS**  
George Apostolidis  
Earl Carter  
Marcus Clinton  
Cypert and Leong  
Flood Slicer  
William Furniss  
Richard Glover  
John Gollings  
Ivolve Studios  
Geoff Lung  
Shannon McGrath  
Trevor Mein  
Urban Angles  
Mikkel Vang

This publication is printed with vegetable-based inks on paper stock that is manufactured using elemental chlorine-free pulp sourced from plantation grown timbers.

Both printer and paper manufacturer are accredited to ISO 14001, the internationally recognised standard for environmental management.



## **BATES SMART**

**Architecture  
Interior Design  
Urban Design  
Strategy**

For 158 years, Bates Smart has been at the forefront of practice in Australia, delivering projects around the world from their studios in Melbourne and Sydney.

Bates Smart has an unparalleled reputation for the design and delivery of architecture, interior design and urban design projects.

Specialising in commercial, residential, hospitality, health and research projects, Bates Smart has specific skills in dealing with larger and more complex projects with particular experience in mixed use buildings.

No project can attain brilliance without a great founding idea. At Bates Smart our projects are brought to life through a rigorous, astute, and highly creative design approach working in collaboration with our clients.

Our reputation for design excellence is founded on a disciplined intellectual base. We develop a thorough understanding of the design opportunities offered by each individual project, and we create design solutions which speak directly to the challenge.

Almost uniquely, we address all design issues simultaneously through collaborative teams of architects and interior designers working in concert. From urban and façade design to perfecting fine-grain interior details, Bates Smart crafts seamless holistic solutions.

We pay special attention to the environmental performance and long-term durability of our buildings. We harness proven sustainable principles and technologies in order to create buildings that stand the test of time.

Our talented team of over 200 is constantly developing its capacity to produce outstanding results around the world. We invest in the latest tools for global teamwork, and maintain an expanding network of collaborators whose special skills complement our own.

## **OFFICES**

### **MELBOURNE**

*1 Nicholson Street  
Melbourne, VIC  
3000  
Australia*

*Telephone  
+61 3 8664 6200*

*Facsimile  
+61 3 8664 6300*

*Contact  
jcopolov@batessmart.com*

### **SYDNEY**

*243 Liverpool Street  
East Sydney, NSW  
2010  
Australia*

*Telephone  
+61 2 8354 5100*

*Facsimile  
+61 2 8354 5199*

*Contact  
sswaney@batessmart.com*

*www.batessmart.com*

**BATES SMART™**